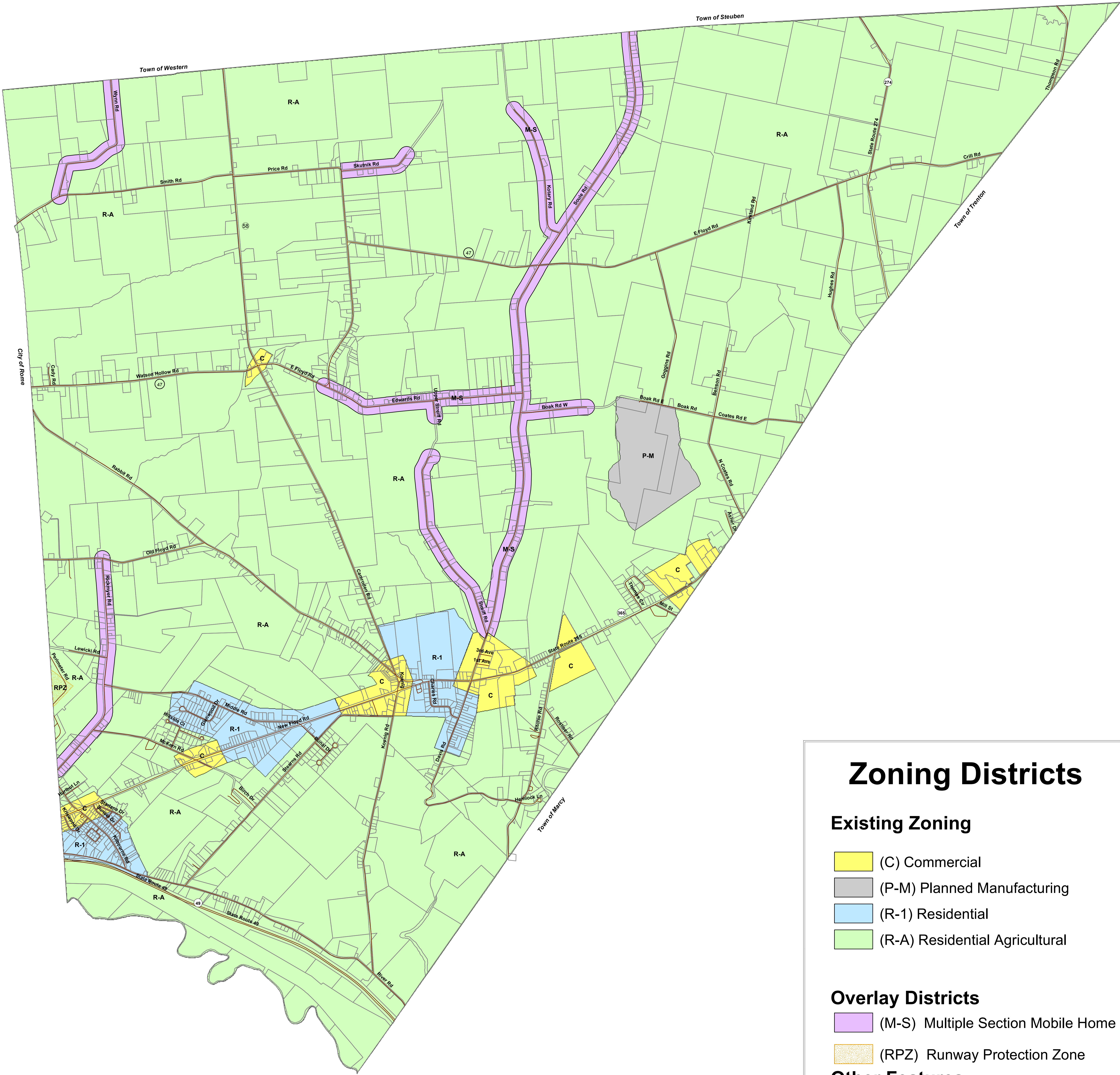


Town of Floyd Zoning Map

Zone Adoption Date: April 10, 2009



Zoning Districts

Existing Zoning

- (C) Commercial
- (P-M) Planned Manufacturing
- (R-1) Residential
- (R-A) Residential Agricultural

Overlay Districts

- (M-S) Multiple Section Mobile Home
- (RPZ) Runway Protection Zone

Other Features

- Roads
- Parcels

Note: The locations of FEMA floodplains, NYS DEC wetlands, and NYS Ag. Districts are taken into consideration when making relevant zoning and planning decisions.

Note: This map was partially created from a scanned paper map using GIS "rubber sheeting" techniques. This method of map creation tends to increase the potential for spatial errors when used in conjunction with other coordinate based data.

This information has been compiled for planning purposes and may not be reproduced or transmitted for commercial purposes or for any other purpose without the prior approval of the Herkimer Oneida Counties Comprehensive Planning Program (HOCCPP). The HOCCPP shall not be liable for any misuse or misrepresentation of this information. The HOCCPP makes no claim as to the completeness or accuracy of the data contained hereon.

